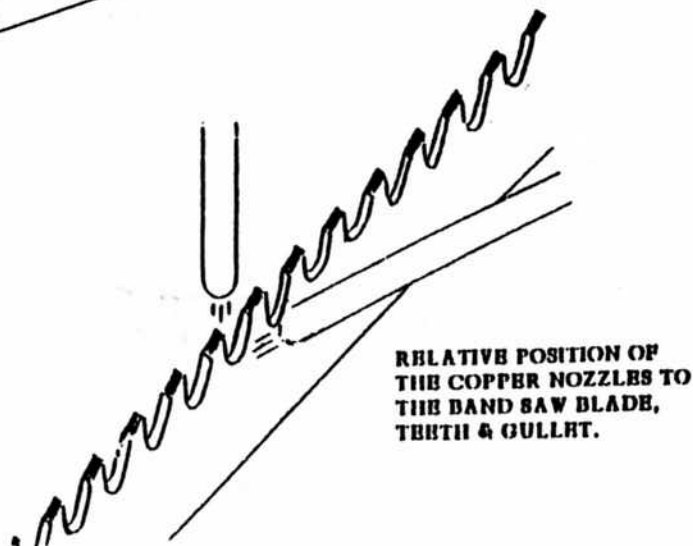
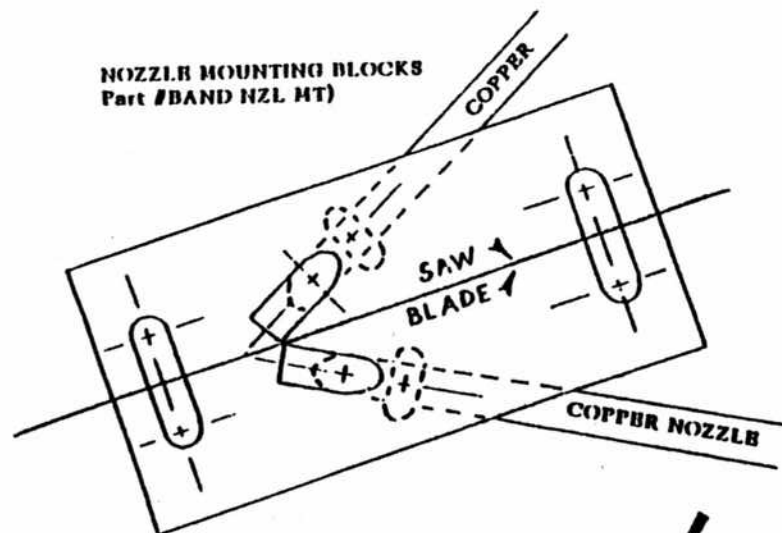
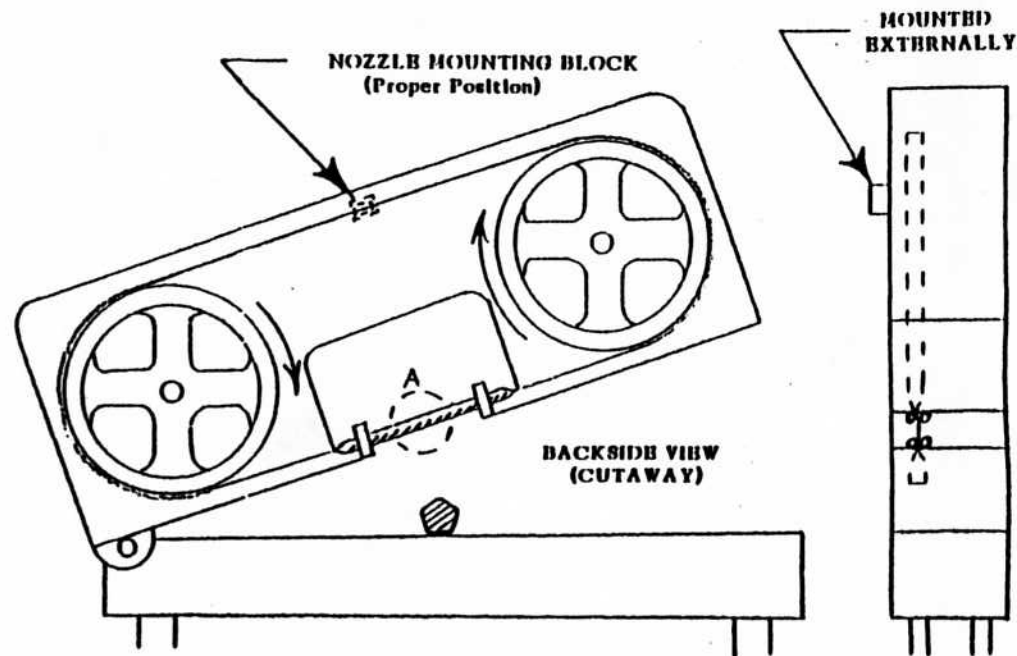


## NOZZLE MOUNTING BLOCK - INSTALLATION INSTRUCTIONS

1. **POSITIONING:** along the blade's path, opposite the area where the blade cuts the workpiece, trace the edge of the blade onto the side of the housing facing the blade's teeth.
2. **MOUNTING HOLES:** find the approximate midpoint of the blade and using this line, drill and tap two (1/4" - 20) holes 3 1/4" apart. Use these two holes and two machine screws to attach the nozzle mounting block to the housing.
3. **FLUID PORTS:** use the attached nozzle mounting block as a drill jig. Use a 9/32" bit to drill two angled holes.
4. **NOZZLES:** insert copper nozzles into the slip fittings of the mounting block. Slide them through the block until they are protruding out the bottom.
5. **SPRAY ADJUSTMENT:** make sure that the Accu-Lube/air mixture is centered on the teeth of the bandsaw blade. If it isn't, adjust the mounting block from side to side, or adjust the nozzles in or out as required for alignment.



## HORIZONTAL BANDSAWS



DETAIL A



### NOTES:

1. Lubricating Systems recommends the use of two nozzle applicators on all bandsaw applications.
2. The main objective is to coat the cutting edge of each tooth before it enters the cut. The use of two angled nozzles allows for some lubrication on the side of the blade.